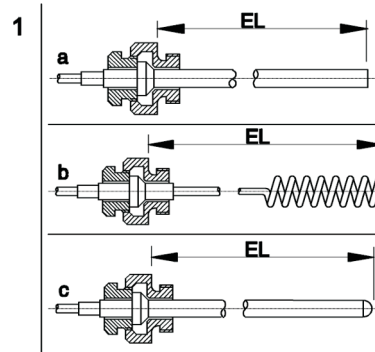


## LEITENBERGER

Mess- und Regeltechnik GmbH  
 Bahnhofstraße 32/33  
 D-72138 Kirchentellinsfurt  
 Fon: +49 (0)7121/908-0  
 Fax: +49 (0)7121/908-200  
 E-Mail: mrt-info@leitenberger.de

## PROBES

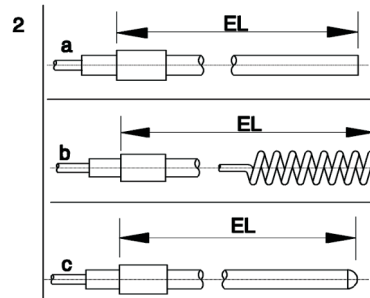
### Typ 1



#### Type 1a, 1b, 1c

- loose double male adaptor
- standard thread sizes: 3/8 BSP or 1/2 BSP (sizes M 14 x 1.5, 3/4 BSP and 1 BSP are available on request)
- combineable with pocket no. 9
- 4, 5, 6, 7.8, 8, 8.5, 10 or 12 mm, Cu or 8, 10 oder 12 mm INOX
- typ 1b for gaseous medium
- 14, 16 or 18 mm, Cu

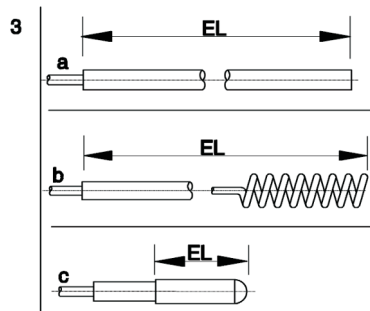
### Typ 2



#### Type 2a, b, c

- no adaptor
- upper part of probe fitted with 8, 10, or 12 mm ferrule
- other diameters on request

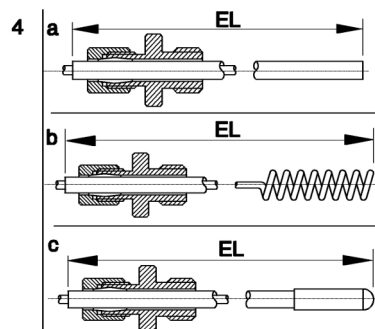
### Typ 3



#### Type 3a, b, c

- plain - no adaptor - no ferrule
- type 3c - diameters 6 or 8.5 mm
- EL depending on range

### Typ 4



#### Type 4a, b, c

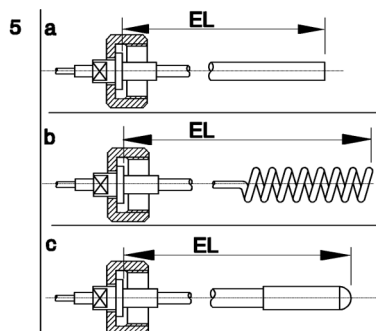
- adaptor with compression olive fitting („sliding nut“)
- standard thread sizes 3/8 BSP or 1/2 BSP
- to be combined with pocket no. 9

The client can determinate at a later date the fitting length within the range of the total probe length.

The adaptor is screwed upon an annealed tube which can be bent behind the adaptor in conformity with the local requirements.

## PROBES

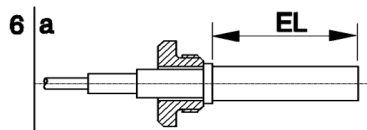
### Typ 5



#### Type 5a, b, c

- union nut, standard 1/2 BSP

### Typ 6

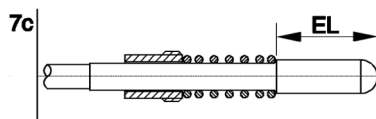


#### Type 6a, b, c

- single adaptor
- recommender for use with solids

Types 1 - 6 (not 3c) also available in INOX!

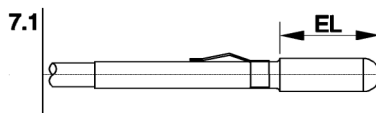
### Typ 7c



#### Type 7c

- knurled nut M 10x1, brass
- pressure spring
- diam. 8.5 mm (only in brass)
- to be fitted with pocket no. 8

### Typ 7.1



#### Type 7.1

- clip spring
- diam. 8.5 mm, brass
- to be fitted with pocket no. 8

## LEGEND

- Cu = copper
- EL = fitting length
- IG = internal thread
- AG = external thread
- SW = wrench size